



PEA-RP250GA

Power Inverter Heat Pump

R410A Large Capacity Ceiling Concealed Ducted System

Advanced inverter technology makes the Mr Slim Power Inverter the number one choice for improving comfort. They provide energy savings of up to 70% annually when compared to a previous non-inverter model. Operating noise has also been reduced thanks to improvements in fan design, while existing pipe work is reusable for easier maintenance and installation.

- **Static pressure of up to 150Pa**



Pictures not to scale

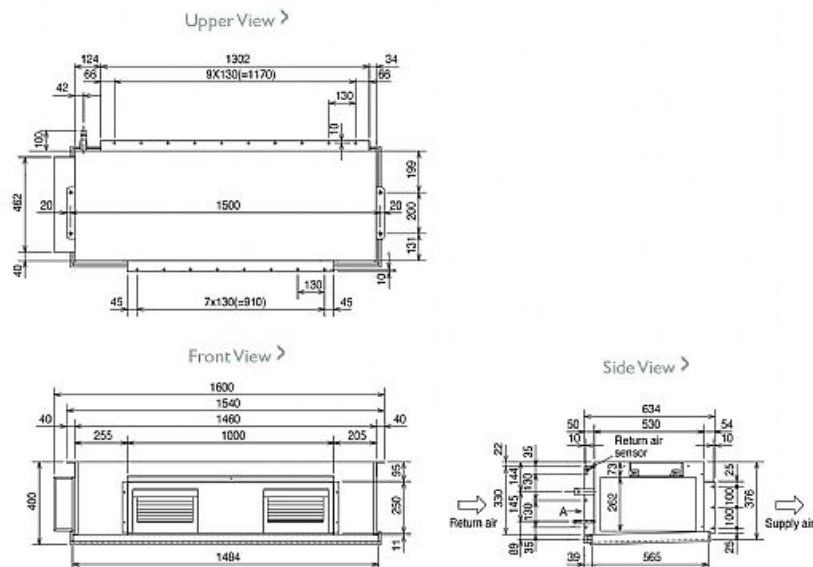
Product Details

| PEA-RP250GA Indoor Unit | |
|---|----------------------|
| Capacity (kW): | |
| Heating (Nominal) (Low - High) | 27.0 (12.5 - 31.5) |
| Cooling (Nominal) (Low - High) | 22.0 (11.2 - 28.0) |
| Heating (UK) (Low - High) | 22.95 (10.65 - 26.8) |
| Cooling (UK) (Low - High) | 19.8 (10.3 - 25.2) |
| SHF R410A (Nominal) | 0.86 |
| Width - mm | 1600 |
| Depth - mm | 634 |
| Height - mm | 400 |
| Weight - kg | 77 |
| Airflow (m ³ /min) - Lo-Hi | 64-80 |
| External Static Pressure Pa | 150 |
| Noise (dBA) - Lo-Hi | 49-52 |
| Pipe Size Gas mm (in) | 28.58 (1 1/8) |
| Pipe Size Liquid mm (in) | 12.7 (1/2) |
| Electrical Supply | 380-415v, 50Hz |
| Phase | 3 |
| Fuse Rating (BS88) - HRC (A) | 6 |
| Power Input (kW) - Heating (Nominal) | 1.18 |
| Power Input (kW) - Cooling (Nominal) | 1.18 |
| Power Input (kW) - Heating (UK) | 1.05 |
| Power Input (kW) - Cooling (UK) | 1.05 |
| Starting Current (A) | 5.6 |
| Running Current (A) - Heating / Cooling | 2.3 / 2.3 |
| Interconnecting Cable No. Cores | 3 |
| Remote Controller Ref | PAR-21MAA |

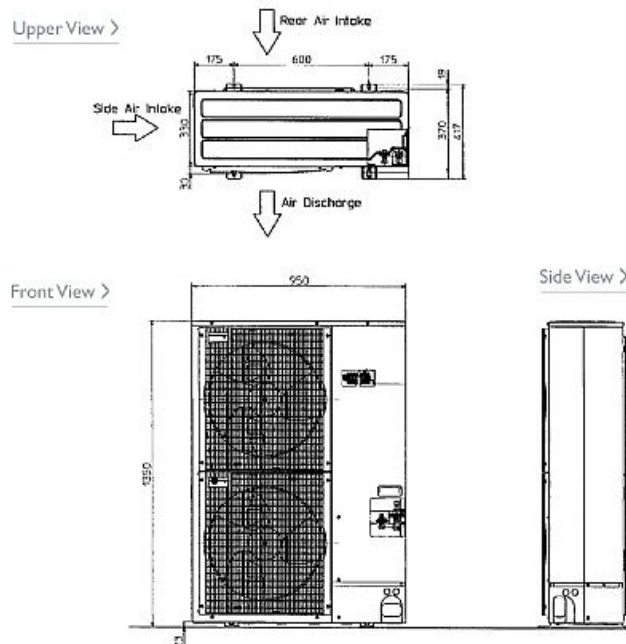
| PUHZ-RP250YHA2 Outdoor Unit | |
|---|----------------|
| Width - mm | 950 |
| Depth - mm | 330 + 30 |
| Height - mm | 1350 |
| Weight - kg | 136 |
| Noise (dBA) (Heating /Cooling) - Lo-Hi | 59-59 /58-58 |
| Electrical Supply | 380-415v, 50Hz |
| Phase | 3 |
| Fuse Rating (BS88) - HRC (A) | 32 |
| Power Input (kW) - Heating (Nominal) | 7.02 |
| Power Input (kW) - Cooling (Nominal) | 7.16 |
| Power Input (kW) - Heating (UK) | 6.25 |
| Power Input (kW) - Cooling (UK) | 6.09 |
| Starting Current (A) | 5 |
| Running Current (A) - Heating / Cooling | 11.1 / 9.5 |
| Mains Cable No. Cores | 5 |
| Max Pipe Length (m) | 120 |
| Max Height Difference (m) | 30 |
| Charge R410A (kg) - 30m | 7.1 |

Dimensions

PEA-RP250GA



PUHZ-RP250YHA2



Telephone: 01707 282880

Email: air.conditioning@meuk.mee.com Website: <http://www.mitsubishielectric.co.uk/aircon>

Mitsubishi Electric reserves the right to make any variation in technical specification to the equipment described, or to withdraw or replace products without prior notification or public announcement.

Tel:
Fax:

